



Sailing the Edge of the Arctic Circle

Summer Solstice at the Arctic Circle with its endless days and the magical midnight sun, there's really nothing quite like it! Set sail into the remote wilderness of the Arctic coast of Iceland. Rugged and untouched nature and otherworldly landscapes will entrance you. Slow down and discover the authentic north with Viking settlements, arctic wildlife and the original Icelandic coastal culture.



YOUR
ADVENTURE
AWAITS

3 days/2 nights

ITINERARY

Overview

Sailing on the adventurous Opal is an experience that leaves no one untouched. Bringing together the best of both worlds; Opal has an authentic charm and feel while driven by an award-winning hybrid-electric engine. Under full sails or running by the hybrid-electric motor, we minimize disturbance to nature and wildlife, enhancing the experience of passengers.

Set sails from Husavik harbour to explore the remote Islands and majestic coastline at the Edge of the Arctic. Our experienced crew will guide you along to discover the hidden treasures and historical settlements of the north. All meals onboard cooked by our very own arctic chef – inspired by local traditions and ingredients.

The journey will be full of exploration and unforgettable experiences.

Day 1: Sail from Husavik

At 8.00 in the early morning, we will board the schooner Opal in Húsavík harbour. Meet and greet with the crew and fellow passengers. Safety instructions, a light refreshment from the chef before we head out to sea.

Sail by Puffin Island. Visit Tungulending, a unique guesthouse in a renovated fishermen's shelter at Tjornes Peninsula where we will have lunch. Cross Skjálfandi Bay over to the Víknafjöll mountains while on the lookout for whales. Sail towards Flatey Island where we will do an evening hike, have dinner and spend the night at anchor.

Day 2: Cross the Arctic Circle

Early rise for a nice breakfast onboard and prepare for sailing. There will be a landing in a deserted bay in . We'll sail towards Grimsey Island, try our luck with fishing and enjoy lunch onboard the schooner. Arrive in Grimsey in the late afternoon. Dock at the pier and visit the local village and hike around this fascinating Island. Dinner onboard surrounded by beautiful scenery in the midnight sun.

Day 3: Grimsey bird cliffs and return to Húsavík

Relaxed morning with breakfast on deck. We'll head out on a zodiac tour around the majestic bird cliffs of Grimsey Island. After a delicious lunch onboard we say goodbye to Grimsey Island and set sail for Húsavík, arriving in the evening.

Note that all activities are dependent on weather and sea conditions, especially Zodiac landings which may have to be moved to an alternative location or cancelled if conditions do not allow a safe access/transfer. Whale watching on the way is also not guaranteed, but chances are pretty high of seeing whales at this time of year. The captain and crew will always have the final decision to change or alter the estimated itinerary.



Details

Trip Code:

008269 - W20

INCLUDED

- Accommodation in bunk beds onboard, bedding, blankets and towels
- Shared washroom facilities
- Breakfast, lunch and dinner daily onboard
- Services of crew, hiking excursions and arrangements as noted in the itinerary
- Zodiac tours as listed

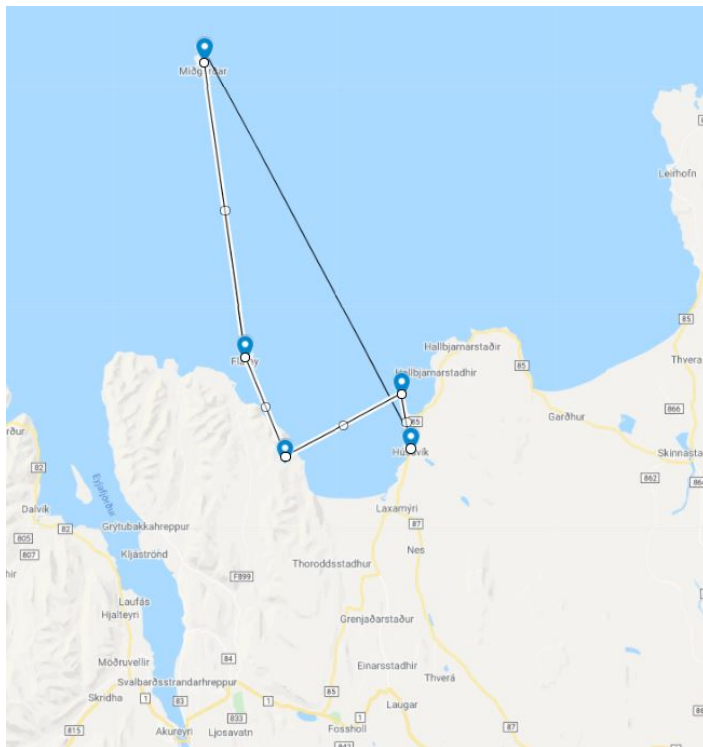
NOT INCLUDED

- Transportation to/from Husavik
- Transfers and accommodation in Iceland pre/post cruise
- Meals other than onboard ship and breakfast at hotels
- Alcoholic beverages
- Optional tours and meals
- Passport and visa fees, vaccinations if applicable
- Excess baggage charges, laundry charges
- Gratuities
- Items of personal nature
- Travel Insurance

TOUR NOTES

Disclaimer: We do our utmost to ensure that information posted on our website is correct at the time of publication, however trip details are subject to change without notice by the suppliers and operators involved. We update the information as soon as possible when changes are advised to us, however, we cannot assume responsibility for such changes made by the suppliers and operators.

ROUTE MAP





The Great Canadian Travel Group
Inc.

greatcanadiantravel.com
TOLL FREE 1 800 661.3830

Contact

Winnipeg

164 Marion Street
Winnipeg, MB, Canada
R2H 0T4
Phone: 204.949.0199
Fax: 204.949.0188
Toll Free: 800.661.3830

Edmonton

(formerly Butte Travel Service)
11733 95th St. NW
Edmonton, AB, Canada
T5G 1M1
Phone: 780.477.3561
Fax: 780.477.9871
Toll Free: 800.661.8906



©The Great Canadian Travel Group Ltd.

Prices listed on our website are stated in Canadian Dollars unless otherwise indicated. Tour details, inclusions and prices were valid at the time of publication but are subject to change without notice due to currency fluctuations, tax increases and at the discretion of the supplier(s). Current prices will be re-quoted for you at the time of booking. By air, land or sea, we can take you anywhere – contact us for your quote today!